

Swanland Village Association

NEWS

The Voice of the Village

No. 86
Autumn
2018



www.swanland.info

always up to date

From the Chairman of the Village Association



Swanland seems to be growing at a great rate at the moment. New developments are being built and proposed sites are under discussion. The village is a thriving community and this is mainly due to the many volunteers who work so hard for us all in different capacities.

Our ever growing population is now under threat of having no doctor's surgery in Swanland. Perhaps the decision makers could look to the future and include a new medical building on one of the intended sites that will be built over the next few years. We must protect our valuable services, and a pharmacy plus a surgery are two basic requirements. At the AGM of the ERY Clinical Commissioning Group (www.eryccg.nhs.uk) it was proposed that a meeting with some of their officers should be set up in the village in the near future. This will be for the public to air their views again. Any further information will be displayed on the notice board to the right of our Heritage Centre, opposite the pond.

Please may I remind you all that our SVA **AGM** will be held at the Village Hall on **Thursday, 15 November at 7.30pm**. Our guest speaker will be **Elizabeth Godber** who will be talking about her new play that is centred around dementia. She is very enthusiastic and I am sure that her wide knowledge of the subject will interest us all. The evening will conclude with cheese and wine and an opportunity to socialise! Please do join us, you will be most welcome.

Jan Rogerson 634 583

Village Hall News

Summer is always a quiet time for the Village Hall as many of our classes cease during the Summer holidays, and this has been the case this year. While this obviously has an impact on our income, vital in maintaining the Hall in top condition, it does give us the opportunity to do some necessary maintenance. We have been able to have our piano tuned, a task that needs complete silence, and not easily found on a normal day. We have also had the floor in the main hall stripped and refurbished, a major job which has significantly improved the appearance of that hall.



I am pleased to report that earlier this year we were reassessed for the quality marks Hallmark 1 and 2. The assessors were very impressed by what they saw and were happy to renew the awards. We are still the only Hall in the East Riding to have achieved Hallmark 3, due for renewal in two years.

For bookings contact: booking@swanlandvillagehall.info

Sheila Ireland – Chair.

Swanland Screen



Swanland Village Association is providing a new season of films for your entertainment this autumn and we hope you will join us for this community cinema experience. All films are at the Village Hall on the **third Saturday of the month** at **7.30pm** and cost £4 (or £2 for schoolchildren) payable on the door. There is an interval when coffee/tea/soft drinks and biscuits are available giving a chance to catch up with friends and neighbours.

The remaining films for this season are:

20 Oct - *The Post* **17 Nov** - *Darkest Hour* **15 Dec** - *Paddington 2*
19 Jan - *The Guernsey Literary and Potato Peel Society*
16 Feb - *All the Money in the World* **16 Mar** - *Dunkirk*
20 Apr - *Leisure Seeker*.

Watch for posters around the village or check out the details at:
www.swanlandvillagehall.info/forthcoming-events.htm

Swanland Live Shows



The latest play at Swanland Village Hall was "*Our Frances*" - a true story based on the life of a young Canadian nurse sent to work in the trenches of World War 1. It was brought to us by Theatre Newfoundland Labrador who appeared here a few years ago.

On **Saturday 10th November at 7.30pm** the SVA has booked the jazz duo, Alan Barnes and David Newton. Alan plays multi reed instruments - saxophones and clarinets - and David is one of the greatest solo jazz pianists this country has ever produced. Be sure to book your tickets early as this is certain to be a sell out!

Tickets from *Yvonne* **634 863** are £8 for adults (£7 for SVA members paying in advance) and £4 for schoolchildren.

For further details see:

www.swanlandvillagehall.info/forthcoming-events.htm

On **Saturday 27th October at 7.30pm** the inimitable French folk singer, **Flossie Malavialle**, will return to the village hall for the tenth consecutive year. The concert will be raising funds for the cholesterol charity HEART UK. Tickets from *Yvonne* **634 863**.

Neighbourhood Watch



Humberside Police crime prevention advice is to make sure all vehicles are securely locked, including when parked on drives. Be careful not to leave anything that could be stolen on view in the vehicle, in particular mobile phones, keys, coats, bags, laptops etc.

Make sure car keys are not left where they can easily be stolen if anyone breaks into your home; this has happened previously in Swanland. Also, as evenings draw in, keep garages, sheds and outdoor equipment secure.

Be alert to telephone and online scams regarding HMRC, Microsoft, Broadband problems, nuisance telephone call-blocking schemes and transferring bank accounts to 'safe accounts'.

Information on Swanland NHW or becoming more involved as a Street Coordinator is available from *Deborah Parry* on **632 576** or d.i.parry@hull.ac.uk. Free ERYC window stickers are available from Deborah, indicating that you do not buy from doorstep sellers.

Swanland WI – calling all ladies

The Swanland WI continues to be a part of village life, one of the many organisations that it's possible to join in our lovely village. It began in 1949, 34 years after the national organisation was born in the UK. The East Yorkshire Federation, of which we are a part, has several committees organising all kinds of activities in which members can participate, e.g. gliding! Some of our members have tried archery this year with great enthusiasm.



Our local programme includes a variety of talks as well as discussion, suppers and outings. Meetings begin at **7.30pm** on the **first Wednesday of the month** and are held at **Christ Church Hall** by the pond. An exception to this is July or August when we enjoy a daytime outing.

For further details contact: *Mrs Lorna Caygill* (President) on **632 543**, *Mrs Bernice Maitland* (Secretary) on **01430 421 960** or find us under Organisations on the village website – www.swanland.info.

Swanland Show



This year's show was held on Saturday 8 September at St Barnabas Church, and the committee is pleased to announce that it was another successful show, the tables were laden with stunning exhibits. The unusual weather this year – a cold and snowy April and hot and dry from May onwards - could have made for some disappointing crops but it seemed the opposite. The growers were out in full force, defying the weather and producing crops worthy of the show bench. As always, there was a good display of artwork and also floral art, and the handicraft section was full of lovely hand-made creations. The produce section was low on exhibits this year so this will be discussed at the next meeting in October, and hopefully changes in some of the classes will help to bring numbers back up again. Cream teas were served by the team of kind volunteers and these seemed to go down well, along with some central heating on what was a cold, wet day. For up-to-date information and pictures of the show, visit the show website: swanlandshow.btck.co.uk. Drop us a line, we would love to hear your comments and ideas: swanlandshow@gmail.com

Sarah Hayden

Swanland Pond Partnership



This year's weather has been very challenging for the aquatic life within the pond. Rapid changes in the weather from very wet to freezing conditions, and then the long-sustained drought, has led to the lowest water levels most villagers can ever remember. Poor water

quality has been the theme from the start of the year as the weather conditions and low water levels have favoured frequent, extensive algal blooms which are not pleasant to look at or to smell. In July, emergency aeration was installed to support the fish population as water levels were continuing to fall.



The moorhen chicks have grown very quickly this year and have probably benefited from feeding on the large number of flies and other insects that have colonised the exposed "beaches" and dried out silt beds. Heron(s) have also taken advantage of the shallower waters hunting for fish early in the morning.

Our next pond maintenance day is **Saturday 20 October** starting at **9:30am**. Please contact *Alyson* **634 168** if you can help.

WE NEED MORE VOLUNTEERS!

Swanland Festival



The tenth Swanland Festival has now been and gone and we hope all those attending the twenty-eight events that formed the programme enjoyed the wide variety provided. Many were old favourites but some new events were included, keeping the programme from becoming stale. The Festival organisers would like to thank those responsible for putting on all the events and those who attended - despite such competing claims on their time as the Football World Cup and Wimbledon Finals.

We hope there will be another Festival in 2020 so if you have any ideas for making this an even better one, please contact:

Jan **634 583** or *Yvonne* **634 863**

Swanland Playing Fields

Our new fund raising venture ‘Swan Fest’ in July was a resounding success and it was a great family day with music from 6 different music acts. They offered a range of music styles. With a Bouncy Castle, face painting, crafts for the children, a bar and BBQ along with fantastic weather, the day really captured the imagination of all who came along. All the bands played for no fee, praised the organisation and expressed a wish to come back again next year. Lisa Weldrick and Howell Gronow managed to put together a brilliant event which helped raise funds towards the running costs of Swanland Playing Fields.



We hope to be able to put on Swan Fest again next year. As it takes some organising, we would like you to join the Swan Fest Committee especially anyone who has organising skills in fund raising, music events, any other ideas or would like to be part of an exciting music event, please contact:

John Hancock on **631 143** or *Lisa Weldrick*, on **swanlandpfa@gmail.com**

Swanland Playing Fields Association relies entirely on **volunteers**. This year we have spent time on repairing the benches and seats around the play area, and after many requests we have now installed a Basketball Hoop. A There is now a new kitchen which has also been installed in the pavilion. Again we are always looking for help in: IT, marketing, accounting, organising and fund raising. If anyone can contribute a few hours a month to keep these excellent facilities up to date for the people of Swanland and the surrounding area, please contact us as above.

Village Website – www.swanland.info

The Village website was originally set up and funded by the SVA. Graham Latter now operates it independently of both the SVA and the Parish Council on a voluntary basis. Its only revenue is from a limited amount of local advertising which is currently insufficient to cover the server fees etc. These cost approximately £100 each year.

The website displays local news and events and also hosts free pages for village organisations. Local business advertising or small donations from whatever source would ensure this website can remain viable. If you can help please e-mail: **website@swanland.info**

Swanland in Bloom Report



2018 – “The year of the Inferno” was a very hot and sunny summer and the plants responded well to the heat - helped by



the dedication of the watering crew. Many thanks go to them and all of the villagers who contributed to make Swanland a most desirable village.

The painting of the pond fence - volunteers readily took up the challenge of the ‘brush’ to clean and paint the fence. One gentleman approached me to say that, unfortunately, he wasn’t physically able to help but he contributed £10 towards the paint- that’s true community spirit! Many thanks go to him. The four new boxes at Christ Church were nicely crafted by Mike Ferguson, were painted grey and have looked very attractive with the Bacopa planted in them forming a veil.

We are very fortunate to have had 600 bedding plants donated by **Coletta & Tyson**, hayracks filled with plants at cost price by **Deepdale Garden Centre** at Barton, and a section of wrought iron fencing supplied and fitted free by **Swangates of Hull**.

The Garage Sale and Open Gardens raised £1095 and brought many people to the village including a couple from Romania who wanted some inspiration for their garden at home. I have been asked to organise a Spring Open Gardens, probably in May - if anyone is interested please contact me:

Mal Cracknell 632 282 or swanlander31@swanlander31.karoo.co.uk

CLASSIFIEDS *Just £10 per insertion*

Mobile Hairdresser
Covering Swanland, West Hull
and surrounding villages
Over 26 years experience in all aspects of hairdressing
Telephone Claire 01482 635 098 or 07831 601767

Membership Report

As always, membership applications have slowed to a trickle as we approach the end of the year. Membership runs from **January to December**, so to pay by Standing Order please fill in the **pink form** you will find in this issue of the Newsletter, and send it to your bank for payment to start on **1 January 2019**. If you prefer to pay in cash, the earliest you can renew for 2019 is at our AGM, which is on 15 November at 7.30pm – fill in your form now and bring it with you to the meeting. All are welcome, with or without membership – though of course you can obtain discounts on Swanland Live Shows through the autumn if you become a member now.

Louise Macfarlane (Membership Secretary)

Swanland Tennis Club



Our friendly club has excellent facilities including 5 refurbished all-weather courts, a pleasant clubhouse and floodlights to let you play all year round. Just drop in to the club to have a look.



We have informal mix-in sessions **Sunday and Tuesday mornings (10.00am onwards)** and **Monday and Thursday evenings (6.00pm onwards)**. Tennis balls and floodlights are provided free at club sessions. We have a range of teams to suit all, and tournaments and social events throughout the year. New members are offered a ½ hour free coaching session with Teo Arkut, our club coach. Teo also organises group and private coaching sessions for all ages and abilities all year round.

Contact: *Teo* **07890 783 807** e mail: **teotennis@hotmail.co.uk**

Christ Church Food Bank Donation Point

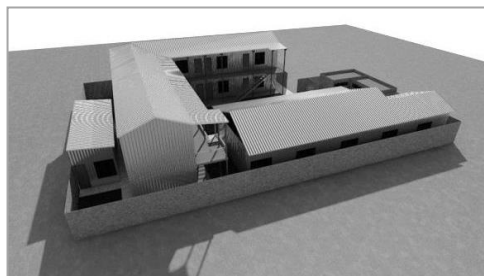
Open between **10am and 12noon** on **Saturdays** and on **Wednesdays (only in term time)**.

Urgently needed food items:

UHT (Longlife) Milk, Tinned Rice Pudding, Teabags (40's), Tinned Fish, Chopped Tomatoes, Tinned Fruit.

SEAT - Providing Care, Education and Hope

A new location for Swanland School Nairobi? We are investigating plans to relocate the current Swanland School to a new site with better access and improved local flooding protection. The site is still within the Ngando slum area but on land close to the local chief's office. We are convinced this is the right next move for the school and the reduced rent would mean payback on the new build costs in just 8 years. ***So how much will it cost to build a new school for 250 children?*** You might be surprised to discover it is just £30k to £40k (we are in the process of obtaining fixed quotes).



If you want to be part of a lasting legacy of providing care, education and hope to this generation of under-privileged children then please do get in contact. Let's show how Swanland residents can make a life changing difference to a community which shares our name!

Please contact:

Richard Swain at richardmswain@gmail.com, 634 306 or give securely online via our website www.swanlandschoolnairobi.org.

Planning Update

Tranby Lane (SVA-B on the local Plan). The development for 36 retirement apartments and 13 dwellings by McCarthy and Stone and Duchy Homes should be completed by the end of the year. On completion a path will run from Christ Church through to Tranby Lane.

West Leys Road (SVA-E on the local Plan). Outline Planning permission was granted by ERYC for 79 houses in 2017. Bellway Homes are now proposing to build 97 homes on this plot. At the time of going to print no application had been submitted so it remains to be seen if the Parish Council and ERYC will oppose it. Details of the current status of the development and how you can make comments to the Planning authorities are on the village website, www.swanland.info.

Heritage Centre



The Heritage Centre now has a timeline display illustrating significant events in the history of Swanland during the 19th and 20th centuries.



You will find it on the right-

hand wall as you come through the door. Thanks are due to Geoff Collier, who produced the display, and to Ian Jones of Sovereign Corporate Imaging, who generously produced and fitted the panel for a greatly reduced fee.

We hope those who attended the recent talk, 'Let's Go Fishing' by Ken Knox, enjoyed the evening and will be tempted to see what else is on offer in the Heritage Centre. We hope to have the unique Swanland Calendars on sale later this autumn so do consider these for Christmas presents.



GREENS WATER SYSTEMS
Water Technology Stores

Serving Swanland for over 25 years with Water Softeners, Filtration Systems and Cartridges, Softener Salt, Quookers and much more.

For expert local advice and service please visit our New Store or call David Parry on 01482 351 769

d.parry@water-systems.co.uk

**647 Anlaby Road
Hull HU3 6SX
(Mon-Thurs 10 - 4)**

**RONALD COGAN
& SONS Ltd.**

Funeral Directors

Sherwood, Station Road
North Ferriby
East Yorkshire HU14 3DJ

01482 631740

01430 449099

www.coganferriby.co.uk



*David & Lynda Cogan
Proprietors*



Jamie Loncaster Memorial Fund

At the end of May the family's fourth **Heart Screening** event took place at South Hunsley School. 194 young people had an ECG, with 6 having an additional Echocardiogram (Ultrasound). Of those screened, 10 were referred for further consultation.

Another **200 places** are available on **20/21 October 2018** when **CRY** will be at **South Hunsley School** once again. Anyone aged 14 to 35 can book a place at: **www.testmyheart.org**

Local hair salon owner Samantha Hillerby and her stylist Robyn Turnbull are running the **Great North Run** and have offered to fundraise for **CRY**.

The family extends their continued appreciation to everyone.

Coffee Morning & Cake Bake

Friday 23rd November
9am to 12noon

St. Barnabas Church Hall, Swanland

Everyone Welcome

Baking donations welcomed on the day



Jamie Loncaster
Memorial Fund
www.jamieloncaster.co.uk

Godfrey Robinson House, North Ferriby

Tea with cake! –Get together with **Leonard Cheshire** as a thank you to all the people in the community who really make a difference at Godfrey Robinson House.

We would like to invite you to come along and enjoy afternoon tea with us on **Thursday 1 November 2018** from **2.00pm-4.00pm** at **All Saints Parish Hall, Church Road, North Ferriby, HU14 3DA.**

November to Remember! – This promises to be an evening of fun, fizz, sumptuous food and entertainment. Celebrate with us on **17 November 2018**, at **Hallmark Hotel, Ferriby Road, North Ferriby, HU14 3LG** from **7.00pm-until late**. Tickets are **£35pp**.

The emphasis in organising this event has been the community, local people, businesses, entertainment and venue. All the proceeds from the evening will go towards the transformation of the patio and south facing garden pathways in order to provide easy wheelchair access to raised beds and fruit trees. This will enable residents to grow produce for their kitchen as well as an outdoor facility for socialising and enjoying the great outdoors.

For tickets and information on both events please contact:

Julie Fenton **632 209** or julie.fenton@leonardcheshire.org.

North Ferriby Flower Club

On **Thursday 8 November** our Club Members will be having a Christmas Social gathering in North Ferriby Village Hall. This evening will be a convivial affair with mulled punch and mince pies and festive demonstrations.

For the finale of 2018, on **Thursday 13 December** at **7.30pm**, we have the artistic **Andrew Grisewood** demonstrating Unwrap The Season. This is an Open Meeting and tickets will be available to buy nearer the time. Andrew is known for his dramatic staging and clothing made by the Strictly Come Dancing wardrobe team.

We have a rest in January so there will be no meeting.

Our AGM is on **14 February 2019** at **7.30pm**. Newcomers are always welcome.

For further information please contact: *Margaret* **634 114**.

Short Mat Bowls



The North Ferriby Short Mat Bowls Club meets throughout the year on **Tuesday and Friday mornings** at **9.45am** in the **North Ferriby Village Hall**. We play for two hours with a short break for refreshments. The club fields two teams in the local leagues.

New members - either skilled or beginners - are always made welcome, with woods available for borrowing. Flat soled shoes are essential. A taster session is offered free, but subsequent sessions cost £2.50. If you become really interested, membership of the club currently costs £15 a year.

Short mat bowls is entertaining, skilful and not too physically demanding, although it keeps you on your feet and involves plenty of bending down. It is ideal for outdoor bowlers wanting to keep their hands in over the winter.

For further information please contact: *Peter Bingham* **634 104**.

North Ferriby Christmas Craft & Produce Market

The next **North Ferriby Market** will be held on

Saturday 24th November, 10.00 am –2.00 pm

at **North Ferriby Village Hall, Church Road, HU14 3AA**.

Come & join the fun,
support local enterprise,
see your friends & neighbours
and choose some lovely Xmas treats & presents.

Over 25 stalls will be brimming with all your favourites:

Local crafts - ceramics, art, plants, toiletries, scarfs, hats, handbags, cards, candles, toys, home décor & gifts of many kinds;

+ **Local produce** – artisan pies & sausage rolls, honey, preserves, chocolates, cakes, muffins & local wine;
and much, much more! including a raffle.

The kitchen will be serving **festive snacks, cakes & drinks**.

(In aid of Village Hall Funds)

Defibrillators

(St. Barnabas Church, Swanland Village Hall and Swanland Playing Fields)

In August there was media coverage relating to defibrillators and the proposal for a nationwide location map. We have three AEDs (*Automated External Defibrillators*) in Swanland and they are all registered with Yorkshire Ambulance Service.

The 999 call handler will assess whether the use of an AED would be beneficial to the patient. If so, they will direct you (or someone with you) to the nearest cabinet and give you the **access code**. Each yellow AED cabinet has a location code printed on it and this might be needed for identification.

Take the orange bag containing the AED to the patient. Open the bag and press the green button on the AED and it will tell you what to do - **you don't need prior training**

The unit assesses the patient and will *only* administer a shock if they are in *Cardiac Arrest*.

You **CAN** ~~kill~~ someone with an AED, but you **COULD** save their life.



D u c h y ~~He~~ **is** ~~now~~ **pr**oud to announce a new life-saving initiative to support the British Heart Foundation by installing defibrillators on as many sites as possible, and then gifting these to the local communities after building is complete.

Installation has now taken place at **Cygnets Gardens, Tranby Lane** in Swanland, which is where our training session with the British Heart Foundation has taken place.

Mires Beck Nursery at North Cave

Anniversary Garden: the refurbishment is well under way, and we'd like to say a massive 'thank you' to **Help For Health** for their extremely generous award of £25,000 towards the project.

Marks & Spencer: chose us as their Charity of the Year so we were delighted to welcome Katie and Kelly from Marks & Spencer, Kingswood, to the nursery. Here they are finding out all about phragmites from Wildflower Supervisor Steve Meays.



Volunteers: we urgently need **volunteers** to help enhance the care we give our service users. Age or experience is not important. You just need a little patience and understanding. Even if you can just spare half a day a week, please contact us: **01430 421 543**

October jobs in the garden:

- Cut back perennials that have died down.
- Move tender plants into a greenhouse or conservatory.
- Divide herbaceous perennials.
- Prune climbing roses.
- Plant out spring cabbages.
- Divide established rhubarb crowns.

**YOUR
Village Association needs
your support!**

Please join us

**Just fill in the form below
and deliver or post it to:**

Louise Macfarlane, 15 Mill Rise, Swanland
HU14 3PN

or to Yvonne Dumsday, Mere House,
3 Main Street, Swanland, HU14 3QP
(opposite the Pond)

It's just £2 per head (cheques payable to
Swanland Village Association). *Make our
job easier by paying by Standing Order.*

You will receive a membership card.

YOUR Next Newsletter

Articles and requests to give notification
of forthcoming events should be sent in
electronic format please to the Editor at:

newsletters@swanland.info

The Newsletter is distributed to ALL
houses in Swanland, making it ideal for
local advertising.

PLEASE NOTE: The deadline for the
next Newsletter to be published in Spring
will be 28 January 2019. Details also
shown on the village website:

www.swanland.info

We cannot guarantee to publish articles
(maximum 150 words) and reserve the
right to edit them. We welcome
photographs to print where appropriate.

SVA Membership Application/Renewal

Name (first person) _____

Name (second person) _____

Address _____

E-mail address/Telephone number (optional) _____

Cheque/Cash (£2 per person) or request Standing Order form.

The SVA Newsletter is published and distributed free to every household in Swanland.
Print costs are met by the SVA and a limited number of local advertisements.

Forward information or articles to the Editor

e-mail: newsletters@swanland.info

To receive news updates from the village website: e-mail website@swanland.info